

2008 ANNUAL REPORT



B.I.N.T.F

**Butte Interagency
Narcotics Task Force**

Prepared by SAS Jeff Smith and SAS Carl Sturdy
March 2009

Table of Contents

| | |
|--|---------|
| Purpose and Mission Statement | i - ii |
| Advisory Council | iii |
| Introduction | 1 |
| Personnel | 2 - 3 |
| Summary of Activity | 4 - 5 |
| Drug Endangered Children Program | 6 - 8 |
| Breakdown of Arrests | 9 - 13 |
| Drug Seizures | 14 - 17 |
| Asset Seizures | 18 |
| Weapon Seizures | 19 |
| Operational Expenses | 20 |
| Narcotics Agent & Support Staff Training | 21 |
| Training Programs Presented by Agents | 22 - 23 |
| Evidence Summary Report | 24 |
| 2009 Task Force Focus and Goals | 25 - 26 |
| Conclusion | 27 |

PURPOSE

The primary purpose of the Task Force shall be the enforcement of the narcotic and controlled substance laws of the State of California in the County of Butte, including all incorporated cities of the County of Butte joining in this Agreement. In carrying out such purposes, Task Force personnel shall:

- A. Identify, investigate and apprehend those persons suspected of violating State narcotic and controlled substance laws in the County of Butte, especially those persons identified as major drug traffickers.
- B. Assist Federal, State and other local law enforcement agencies in the enforcement of Federal and State narcotic and controlled substance laws within the County of Butte.
- C. Share information pertaining to the illegal production, distribution, transportation, and use of narcotics and controlled substances with law enforcement agencies.
- D. Provide training to personnel employed by local law enforcement agencies in the County of Butte in the area of the investigation and enforcement of State narcotic and controlled substance laws.
- E. Conduct public presentations to schools, service clubs, and civic groups in the County of Butte pertaining to the investigation and enforcement of narcotic and controlled substance laws and/or the health risks and other consequences of substance abuse.
- F. Increase the level of supervision and surveillance of persons on probation or parole involved in gang or drug related activity.
- G. Initiate investigations involving street level drug dealers and gang activity with the overall objectives of identifying and apprehending street level traffickers.
- H. Conduct investigations into inter-jurisdictional criminal activity occurring within the County of Butte which arises out of the State narcotic and controlled substance laws where the Task Force is in the most appropriate position to conduct such investigations and has received consent to conduct such investigations by other affected local law enforcement agencies.
- I. Provide “mutual aid” to law enforcement agencies, when appropriate.
- J. Identify and arrest violators placing children at risk in drug and related environments. Rescue children from drug environments.

MISSION

The participating agencies recognize that the illegal production, transportation, distribution, and use of narcotics and other controlled substances are serious law enforcement problems, both in the County of Butte and nationwide; and

Such illegal activities are a cause of a substantial percentage of the burglaries and thefts by those persons who steal in order to finance their illegal drug use; and

The participating agencies also recognize, that because of its rural nature, Butte County has been a prime site for marijuana cultivation, clandestine drug laboratories, and drug smuggling activities; and

The participating agencies further acknowledge that the illegal production, distribution, transportation, and use of narcotics and other controlled substances in the County of Butte are not confined to the unincorporated areas of the County of Butte or any one of its incorporated cities, but are a chain of illegal activities that almost always crosses jurisdictional lines; and

By reason of the foregoing, the participating agencies have determined that it is necessary to commit additional law enforcement personnel to the detection, investigation, and apprehension of those persons engaged in the illegal production, distribution, transportation, and use of narcotics and other controlled substances; and

The participating agencies have also determined that they can maximize the effectiveness and efficiency of the personnel involved in such law enforcement activities by fully coordinating such efforts through the assignment of personnel and material to one countywide Task Force; and

By this Agreement, the Participating Agencies now desire to establish the Butte Interagency Narcotics Task Force with north and south offices, whose purpose will be the enforcement of the narcotic and controlled substance laws of the State of California in the County of Butte, as well as in all of the incorporated cities of the County of Butte joining in the Agreement; and

Therefore, the participating agencies hereby establish the Butte Interagency Narcotics Task Force (which includes BINTF North and BINTF South offices and is hereby referred to as task force) which shall carry out the purposes, receive direction from the respective heads of the participating agencies collectively as its Board, and otherwise have all of the powers, duties, and responsibilities hereinafter provided for by this Agreement.

**BUTTE INTERAGENCY
NARCOTICS TASK FORCE
ADVISORY COUNCIL
2008**

CHAIRMAN
KIRK TROSTLE
CHIEF OF POLICE
CITY OF OROVILLE

PERRY RENIFF
SHERIFF
COUNTY OF BUTTE

MIKE RAMSEY
DISTRICT ATTORNEY
COUNTY OF BUTTE

BRUCE HAGERTY
CHIEF OF POLICE
CITY OF CHICO

GERALD CARRIGAN
CHIEF OF POLICE
TOWN OF PARADISE

JOHN WARDELL
CHIEF PROBATION OFFICER
COUNTY OF BUTTE

GARY KEELER
CHIEF OF POLICE
CITY OF GRIDLEY-BIGGS

JAMES PARKER
SENIOR SPECIAL AGENT IN CHARGE
CALIFORNIA DEPARTMENT OF JUSTICE
BUREAU OF NARCOTIC ENFORCEMENT

INTRODUCTION

The Butte Interagency Narcotics Task Force (BINTF) was formed in October of 1985 to confront a growing drug problem in Butte County. At that time, the BINTF Advisory Council outlined the goals and objectives of the unit as follows:

1. Initiate investigations involving all levels of drug dealers with overall objectives of identifying and apprehending major traffickers.
2. Assist police agencies on specific drug problems.
3. Share information with other law enforcement agencies.
4. Provide training to law enforcement personnel.
5. Conduct public presentations.
6. Provide both a monthly summary report and an annual report to the advisory council and the Department of Justice.
7. Conduct limited criminal investigations outside of narcotics upon request.
8. Conduct annual assessment of the unit's management system.
9. Make periodic assessment of the unit policies.

These nine (9) points are evaluated by the advisory board each year.

PERSONNEL

During 2008, The Butte Interagency Narcotics Task Force (BINTF) was comprised of two (2) commanders responsible for the supervision of agents and support staff in two (2) offices identified as BINTF North and BINTF South operating under one (1) board.

In addition, Butte County Sheriff's Office housed their Special Enforcement Unit in the South Office consisting of one (1) sergeant, one (1) deputy sheriff and one (1) District Attorney Investigator to investigate marijuana cases. The Butte Interagency Narcotics Task Force (BINTF), and the Butte County Sheriff's Office Special Enforcement Unit (SEU) work to exchange intelligence information and supplement each other's resources as needed.

In January of 2008, the only agent from the California Department of Justice Firearms Division located in the South Office left.

The BINTF North Office staffing consisted of one (1) commander, five (5) agents, one (1) part-time Children's Services Division (CSD) Social Worker and two (2) full-time secretaries. The BINTF South Office, in addition to one (1) commander, was comprised of six (6) agents, one (1) part-time CSD Social Worker, and two (2) full-time secretaries. Grant funding from the Office of Emergency Services paid partial salaries for four (4) agents in the BINTF North Office and two (2) agents in the BINTF South Office.

In July of 2008, BINTF hired a new part-time evidence custodian to process evidence seized by the Task Force.

Assigned Personnel

North County BINTF Office

Parent Agency

| | |
|--|----------------------------------|
| John Thulin- Special Agent Supervisor (Left 09/08) | California Department of Justice |
| Jeff Smith - Special Agent Supervisor (Assigned 09/08) | California Department of Justice |
| Matt Nowicki - Agent | Chico Police Department |
| James Dimmitt - Agent (Left 08/08) | Chico Police Department |
| Mike Rogers - Agent (Left 11/08) | Butte County Probation |
| Jennifer Merrin - Agent (Assigned 11/08) | Butte County Probation |
| Pat McNelis - Agent | Butte County Sheriff's Office |
| Ron Belser | Paradise Police Department |
| Tonya Houston (Assigned 12/08) | Butte County District Attorney |
| Erin Sweet | Butte County Children's Services |
| Terry Turner - Secretary | Butte County Sheriff's Office |
| Robyn Nuzzo - Secretary | Butte County Sheriff's Office |

Assigned Personnel
South County BINTF Office

Keith J. Krampitz - Special Agent Supervisor
(Retired 12/08)

L. Carl Sturdy - Special Agent Supervisor

Jeff Wiles - Agent (Left 07/08)

Tonya Houston - Agent (Assigned 07/08, Left 12/08)

Kevin Sorenson - Agent (Assigned 12/08)

Sue Webber-Brown - Agent (Injured All Year)

Becky Haury - Agent (Left 01/08)

Jennifer Merrin - Agent (Assigned 01/08, Left 11/08)

Nate Henry - Agent (Assigned 11/08)

Rodney Harr - Agent

Gil Zarate - Agent (Left 02/08)

Alex Houston - Agent (Assigned 10/08)

David Bottom - Agent (Left 03/08)

Sam Burnett - Agent (Assigned 04/08)

Jason Piazza - Agent

Gary Deming - Evidence Technician (Hired 07/08)

Desiree Vance - Social Worker

Tammy Stuart - Secretary

Kathy Blakely - Secretary

Parent Agency

California Department of Justice

California Department of Justice

Butte County District Attorney's

Butte County District Attorney's

Butte County District Attorney's

Butte County District Attorney's

Butte County Probation Department

Butte County Probation Department

Butte County Probation Department

Gridley-Biggs Police Department

Oroville Police Department

Oroville Police Department

Butte County Sheriff's Office

Butte County Sheriff's Office

Butte County Sheriff's Office

BINTF

Butte County Children's Services

Butte County Sheriff's Office

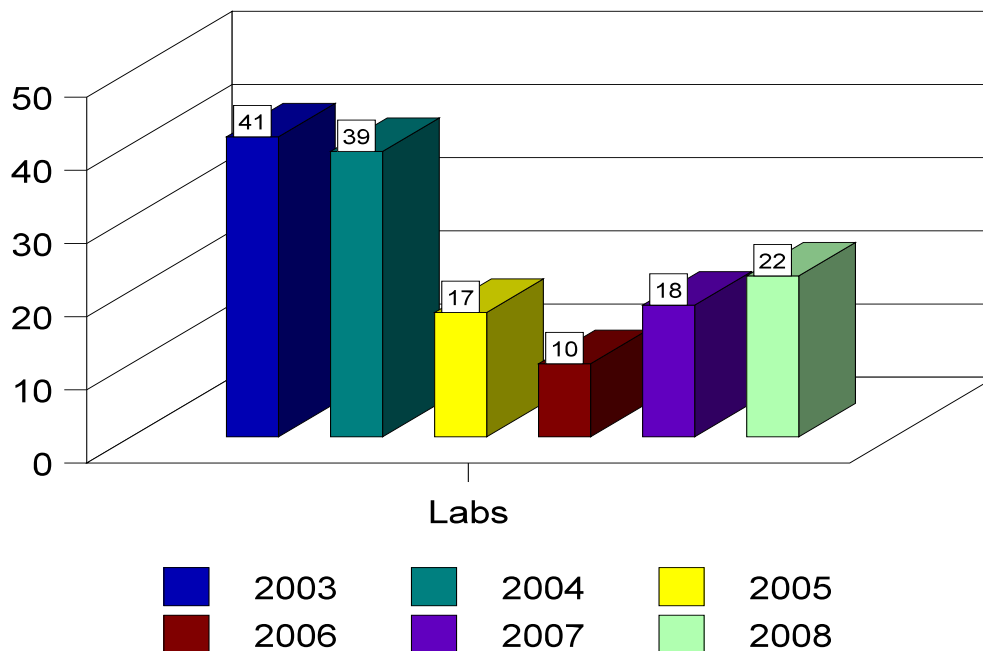
Butte County Sheriff's Office

SUMMARY OF ACTIVITY

In 2008, methamphetamine lab seizures increased slightly in California, but remained considerably low compared to years past. This was due primarily to the regulation of pseudoephedrine and the large number of Mexican National labs operating outside the United States.

Methamphetamine laboratories seized by BINTF saw a slight increase in 2008 compared to the last 2 years seizures.

In 2008, 37 counties in California reported the seizure of clandestine labs, compared with 33 counties reporting seizing labs in 2007. Of the 37 counties reporting clan lab seizures, Butte County ranked number 3 in the state per capita for laboratory seizures, behind Merced and Stanislaus County. Butte County ranked number 4 statewide for a total number of laboratories seized. With a total of 22 laboratory investigations, 7 were laboratory dump sites.



The California Department of Toxic Substance Control (DTSC) was responsible for cleanup costs of the actual removal of clandestine laboratories, and the abandoned laboratory chemicals or apparatus, referred to as “lab dump sites”. The costs for cleanup varies based on

the volume and size of each particular case. Many of the chemicals have to be separated for correct storage and safe transportation. In 2008, DTSC was responsible for cleanup costs in Butte County in the amount of \$24,262.00. This would be a significant impact on local agencies, both in the expenditure of manpower resources, and cleanup costs, if not for the presence of the Butte Interagency Narcotics Task Force and the coordination with DTSC.

The Task Force opened 242 cases and closed 236 cases during the year. BINTF agents wrote and executed 122 search warrants and arrested 316 individuals. BINTF agents also conducted 34 probation and parole searches. Methamphetamine is the continued drug of choice in Butte County.

Methamphetamine was involved in 53% of the drug arrests made by BINTF. Marijuana played a big role in the cases BINTF did in 2008. Marijuana was involved in 21% of the drug arrests made by BINTF. These arrests were mainly for possession for sale and cultivation. Most of the subjects arrested did have valid Proposition 215 recommendations, but were using the recommendation as a blind shield to profit from selling the marijuana. The drastic increase in the amount of marijuana available in Butte County has led to numerous home invasion robberies and a homicide.

Of the arrests BINTF made in 2008, 8 of the subjects were illegal aliens, all from Mexico. These subjects were arrested on drug trafficking charges. Once booked into jail, the Department of Homeland Security, Immigration and Customs Enforcement (ICE) immigration holds are requested on these persons.

Butte County has several different criminal street gangs. Thirty-five (35) of the subjects BINTF arrested in 2008, claimed themselves as being a member of one of the gangs in Butte County. The majority were either associated with the Butte County Gangsters or the Norteno gang which are the most common criminal street gangs in Butte County.

DRUG ENDANGERED CHILDREN

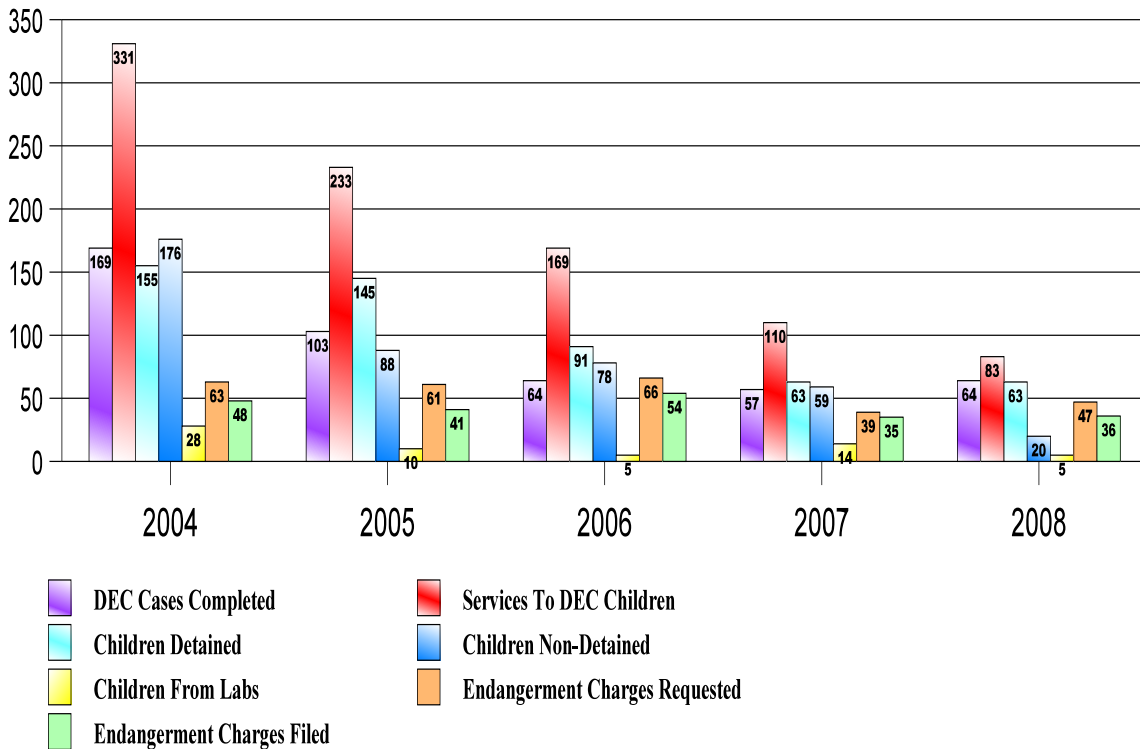


Figure 3

During the 2008 calendar year, the BINTF DEC team completed 64 Drug Endangered Children investigations (in purple above). A total of 83 children (in red above) were provided services by Butte County Children’s Services Division (CSD). Of the total number of children, 63 children were physically detained (in turquoise above) and 20 children were non-detained (in blue above). All of the 83 children were entered into the Child Welfare System /Case Management System (CWS/CMS) with Children’s Services Division.

Drug Endangered Children (DEC) cases, for the purposes of this program and the annual report, are children who are responded to by the BINTF DEC team. This is a multi-discipline team which most often includes a social worker from Butte County Children’s Services Division (CSD) and involves other agencies, such as Code Enforcement. To be considered a DEC case, the investigation must include a responding CSD social worker to the scene. On rare occasions, when the assigned DEC social worker cannot respond and a replacement is unable to be located, then an immediate referral to CSD must be made, and some type of follow-up service is provided to improve the child’s life.

DRUG ENDANGERED CHILDREN PROGRAM

Detectives assigned to the North and South office of the Butte Interagency Narcotics Task Force (BINTF) also work Drug Endangered Children (DEC) cases as they relate to drug enforcement. A Butte County Sheriff's Office (BCSO) Deputy is funded from the general budget as a full-time DEC Detective in the South Office. This position is a priority with Sheriff Perry Reniff who is committed to the DEC program. Other full-time DEC staff positions assigned to BINTF include two (2) full-time DA Investigators. The director of the Butte County Department of Social Services supports the DEC program by dedicating two (2) social workers, Desiree Vance, assigned to the BINTF South office, and Erin Sweet, assigned to the BINTF North office. These two (2) social workers are critical members of the team and also respond to other allied law enforcement agencies in Butte County to assist in DEC investigations on a case-by-case basis.

In 2008, sixty-four (64) DEC investigations were conducted by BINTF detectives. Within those cases, eighty-three (83) children were responded to.

BINTF Detectives responded to eighty-three (83) children, of which sixty-three (63) were taken into protective custody and placed into foster care. Of those children placed into protective custody, forty-five (45) children underwent hair sample analysis and twenty-six (26) children underwent urinalysis to screen for exposure to illegal drugs. Twenty-four (24) children tested positive for at least one illegal drug in hair sample analysis and six (6) children tested positive for at least one illegal drug in urinalysis tests. Forty-seven (47) suspects were arrested for Child Endangerment violations. Of those suspects arrested, thirty-six (36) faced charges of Child Endangerment in Court. Twenty-seven (27) of those suspects were convicted of Child Endangerment violations. Two (2) cases are currently pending.

The majority of the children responded to are provided services from Butte County Children's Services. Those services can include counseling services, substance abuse treatment, parent education, anger management counseling and case management services. The goal of Butte County Children's Services is to provide treatment to the families in an attempt to safely reunify families, if possible, in the best interest of the child.

Each DEC case is unique. Young children are often able to accurately draw drug paraphernalia or verbally articulate the drug activity occurring in the home. Many times the children living in the home are exposed to and included in the illegal activity, as in one (1) case where four young children were dressed in gang attire, taught gang symbols and photographed making gang-related hand gestures while adults near them smoke drugs. In another case, six (6) children were living in filth, sleeping on floors that were covered in dirt and grime. A toddler in the home tested positive for four (4) illegal drugs. In another case, a 1-year-old toddler was rushed to the Intensive Care Unit at Sutter Memorial Hospital after ingesting marijuana. The

child went into a comatose state and had to have respiratory assistance. In another case, an infant was found lying on a dirty mattress, surrounded by cigarette butts and feces. Drug paraphernalia was present in the home. The mother used methamphetamine throughout her pregnancy and had previously had three (3) children taken away from her by Butte County Children’s Services and placed for adoption.

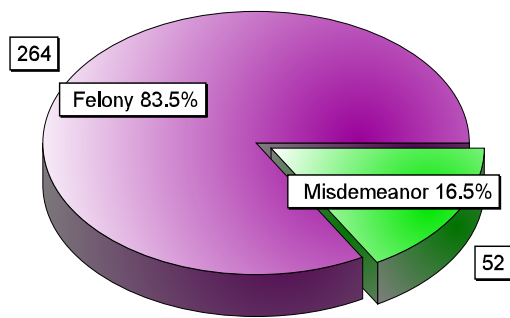
All of the children rescued came from homes where drug activity was present. In many of the homes, other hazards, such as filth, rodent and cockroach infestations, toxic chemicals and fire hazards were also present and pose significant risk to the health and safety of the children.

Of particular concern, seventeen (17) children responded to were living with parents who were valid users of medicinal marijuana. Those children were exposed to their parent’s medicinal marijuana. Medicinal marijuana poses a new challenge to DEC investigations. BINTF Detectives must balance the permitted use of medicinal marijuana to the risk of harmful drug exposure to children. Of the seventeen (17) children responded to in medical marijuana cases, sixteen (16) of those children underwent drug testing. Of the sixteen (16) children, twelve (12) tested positive for marijuana.

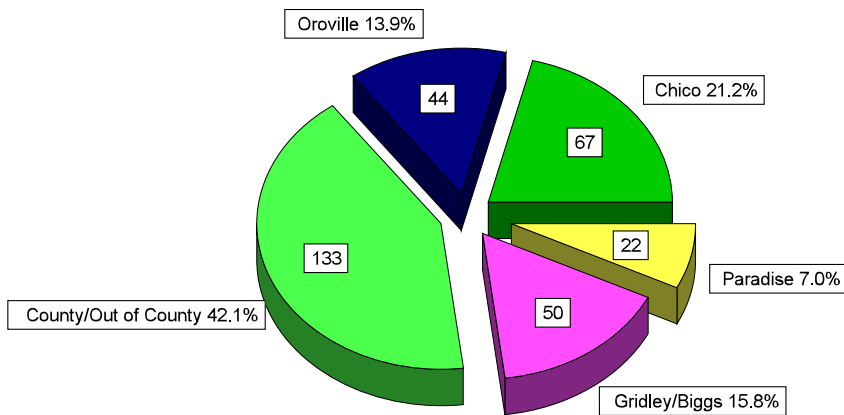
Out of the twenty-two (22) laboratories that BINTF responded to in 2008, two (2) of the laboratories were located in residences where children were present. Of the five (5) children affected by the methamphetamine laboratories, three (3) children were taken into protective custody. The laboratories were located in garages and outbuildings on the property. In one case, the children were able to describe the smell of the laboratory as well as the jars and chemicals used in the manufacturing process. Of the five (5) children, three (3) received toxicology screens and those results were negative for illegal drugs.

| Year | Cases Investigated | Children Responded To | Children From Labs | Requests Filed | Charges Filed By D.A. |
|-------------|---------------------------|------------------------------|---------------------------|-----------------------|------------------------------|
| 1998 | 38 | 87 | 31 | – | 19 |
| 1999 | 26 | 45 | 29 | 15 | 9 |
| 2000 | 42 | 89 | 33 | 24 | 24 |
| 2001 | 44 | 111 | 44 | 50 | 43 |
| 2002 | 75 | 174 | 24 | 77 | 65 |
| 2003 | 96 | 223 | 11 | 64 | 51 |
| 2004 | 169 | 331 | 28 | 63 | 48 |
| 2005 | 103 | 233 | 10 | 61 | 41 |
| 2006 | 64 | 169 | 5 | 66 | 54 |
| 2007 | 57 | 122 | 14 | 39 | 35 |
| 2008 | 64 | 83 | 5 | 47 | 36 |

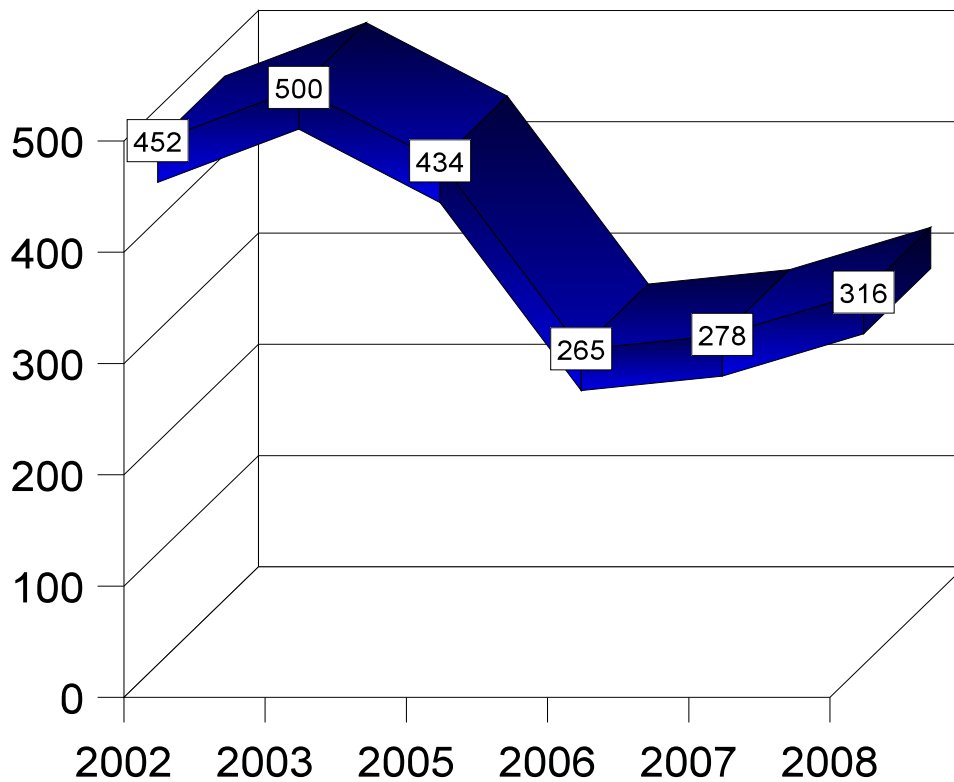
2008 Arrests by Classification



Arrests by Location



ARRESTS



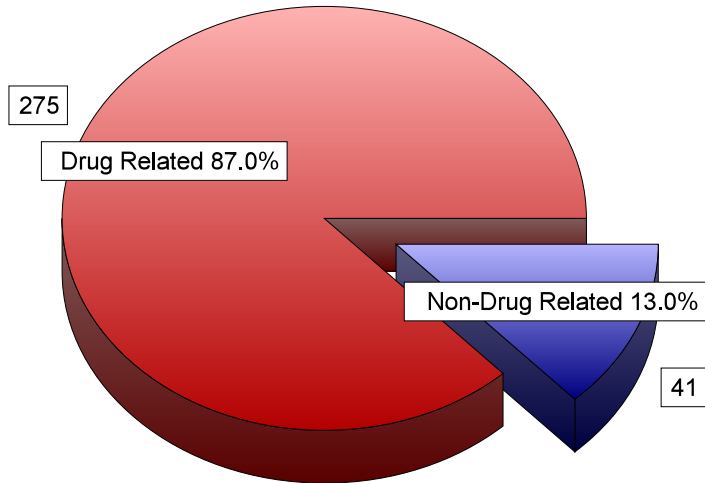
NOTE: In July of 2006, three agents and the commander for the Chico BINTF office were reassigned. In addition, the Paradise Police Detective was promoted and reassigned to patrol in September of 2006.

Three of the agent positions were filled in January of 2007, and the Paradise Police Detective position was filled in November of 2007. There were also other personnel reassignments during 2007.

In September of 2008, The Chico Police Department pulled one of the two Chico Police Detective positions in the Chico BINTF office due to budget constraints.

The above graph reflects a decline in arrests during that time period.

ARRESTS BY TYPE



ARRESTS - ANNUAL COMPARISON

| 2002 | 2003 | 2004 | 2005 | 2006 | 2007 | 2008 |
|------|------|------|------|------|------|------|
| 452 | 500 | 506 | 434 | 265 | 278 | 316 |

PRIMARY VIOLATIONS

Drug Related

| | |
|--|------------|
| Methamphetamine | 168 |
| MDMA | 1 |
| Heroin | 1 |
| Marijuana | 67 |
| Cocaine | 8 |
| Cocaine Base | 5 |
| Opium | 0 |
| Other Controlled Prescription Drugs | 14 |
| Steroids | 0 |
| Sub-Total | 264 |

Non-Drug Related

| | |
|----------------------|------------|
| Probation Violations | 3 |
| Parole Violations | 8 |
| Warrant Arrests | 10 |
| Weapon Violations | 6 |
| Traffic Violations | 10 |
| Other | 15 |
| Sub-Total | 52 |
| TOTAL | 316 |

ARREST CLASSIFICATIONS & LOCATIONS

Arrests

| | |
|--------------|------------|
| Felony | 264 |
| Misdemeanor | 52 |
| Total | 316 |

Arrests by Location

| | |
|---------------|------------|
| Chico | 67 |
| Oroville | 44 |
| County | 130 |
| Biggs | 2 |
| Out of County | 3 |
| Gridley | 48 |
| Paradise | 22 |
| Total | 316 |

Classifications

| | |
|------------------|------------|
| Major Dealers * | 135 |
| Miscellaneous ** | 113 |
| Cultivation | 27 |
| Non-Drug | 41 |
| Total | 316 |

* Major Dealers includes: individuals arrested for manufacturing, dealing, and/or possession for sale of ounces to pound quantities of controlled substances.

** Miscellaneous includes: individuals arrested for simple possession and/or possession for sale of gram quantities.

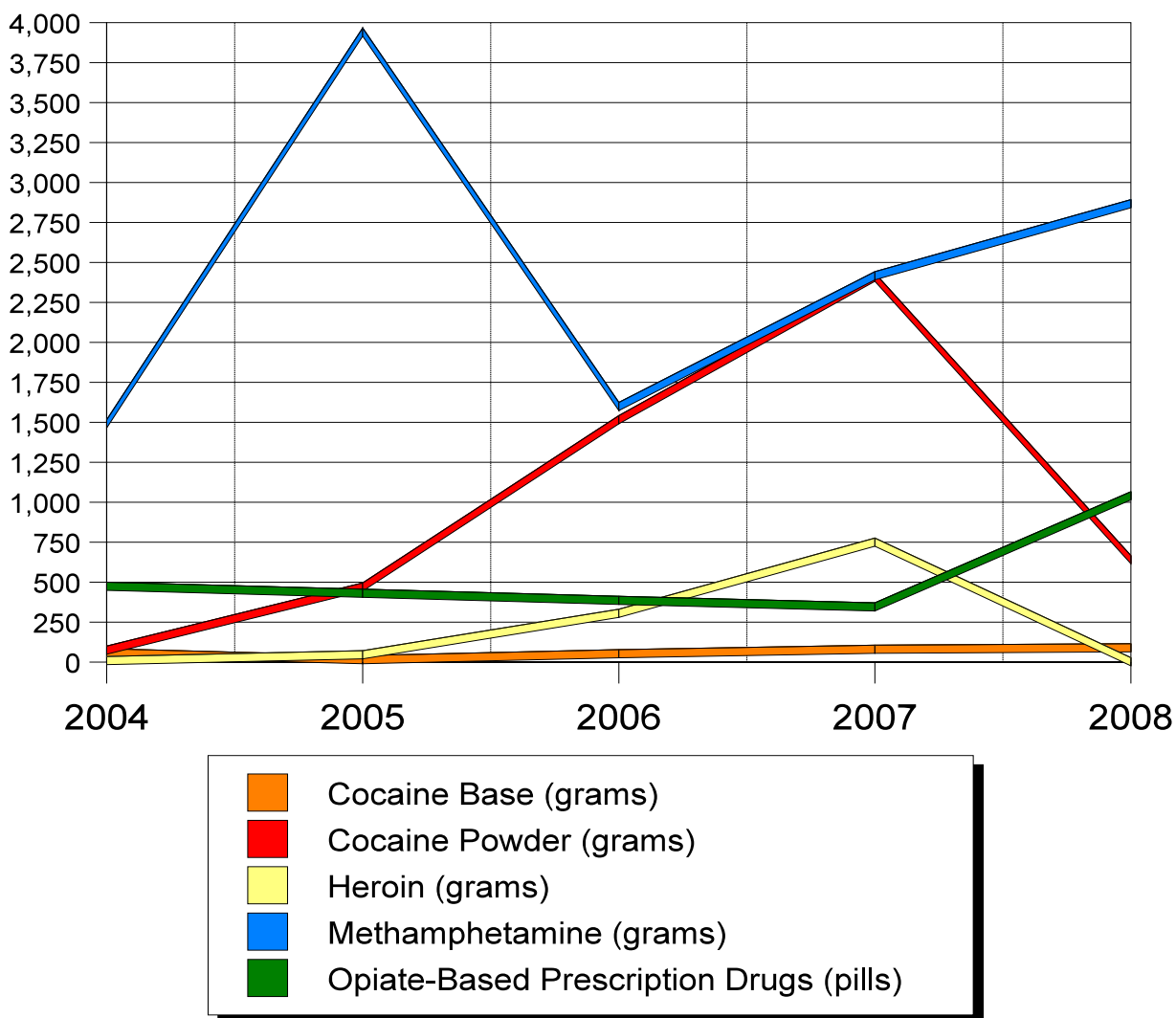
DRUG SEIZURES

| <u>DRUG</u> | <u>WEIGHT</u> | <u>STREET VALUE</u> |
|---------------------------------|---------------------------|-----------------------|
| Cocaine (Base) | 89.81 grams | \$8,981.00 |
| Cocaine (Powder) | 641.03 grams | \$64,103.00 |
| Hashish | 216.96 grams | \$10,848.00 |
| Heroin | 3.0 grams | \$300.00 |
| Marijuana (Processed) | 253,515.91 grams | \$5,070,304.20 |
| Marijuana Plants | 912 plants | \$2,736,000.00 |
| MDMA (Ecstasy) | 180.5 dosage units | \$3,610.00 |
| Methamphetamine (Crystal) | 2,896.51 grams | \$434,476.50 |
| Methamphetamine (Liquid) | 82.0 cc | \$30.00 |
| Psilocybin | 9.73 grams | \$194.60 |
| Opiate-Based Prescription Drugs | 1,041 dosage units | \$13,775.00 |
| Other Prescription Drugs | 570 dosage units | \$5,725.00 |
| | TOTAL STREET VALUE | \$8,348,347.30 |

Estimating the street value of drugs can be difficult due to the varying purities and quantities available on the street. When a drug is seized, a purity level is assigned to it based on all available information. Once the purity is established, a value can be applied to the drug. To obtain a street value of any drug, the Commanders use the Western States Information Network Publication (WSIN), "Illegal Drug Price List." This publication establishes prices of drugs based on street level purity. This information is then factored with information from local drug users/dealers obtained during interviews.

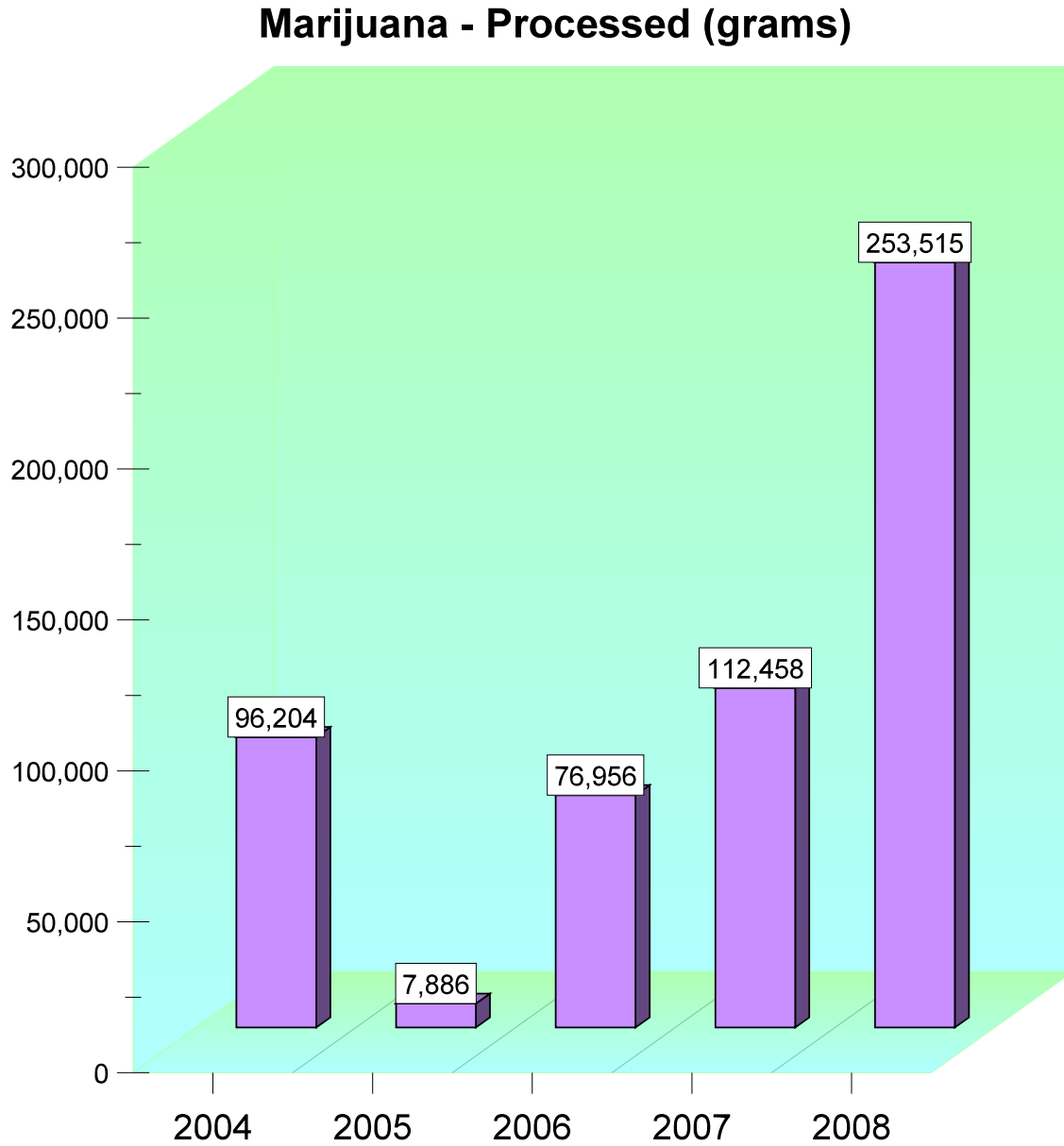
DRUG SEIZURE TRENDS

| DRUG TYPE: | 2004 | 2005 | 2006 | 2007 | 2008 |
|---|-------------|-------------|-------------|-------------|-------------|
| Cocaine Base (grams) | 58.7 | 15.4 | 52.6 | 81.2 | 89.8 |
| Cocaine Powder (grams) | 75.0 | 470.7 | 1,516.7 | 2,408.4 | 641.0 |
| Heroin (grams) | 10.4 | 46.3 | 305.6 | 750.8 | 3.0 |
| Methamphetamine (grams) | 1,491.0 | 3,941.2 | 1,599.7 | 2,417.0 | 2,896.5 |
| Opiate-Based Prescription Drugs (pills) | 475.0 | 431.0 | 387.0 | 346.0 | 1,041.0 |



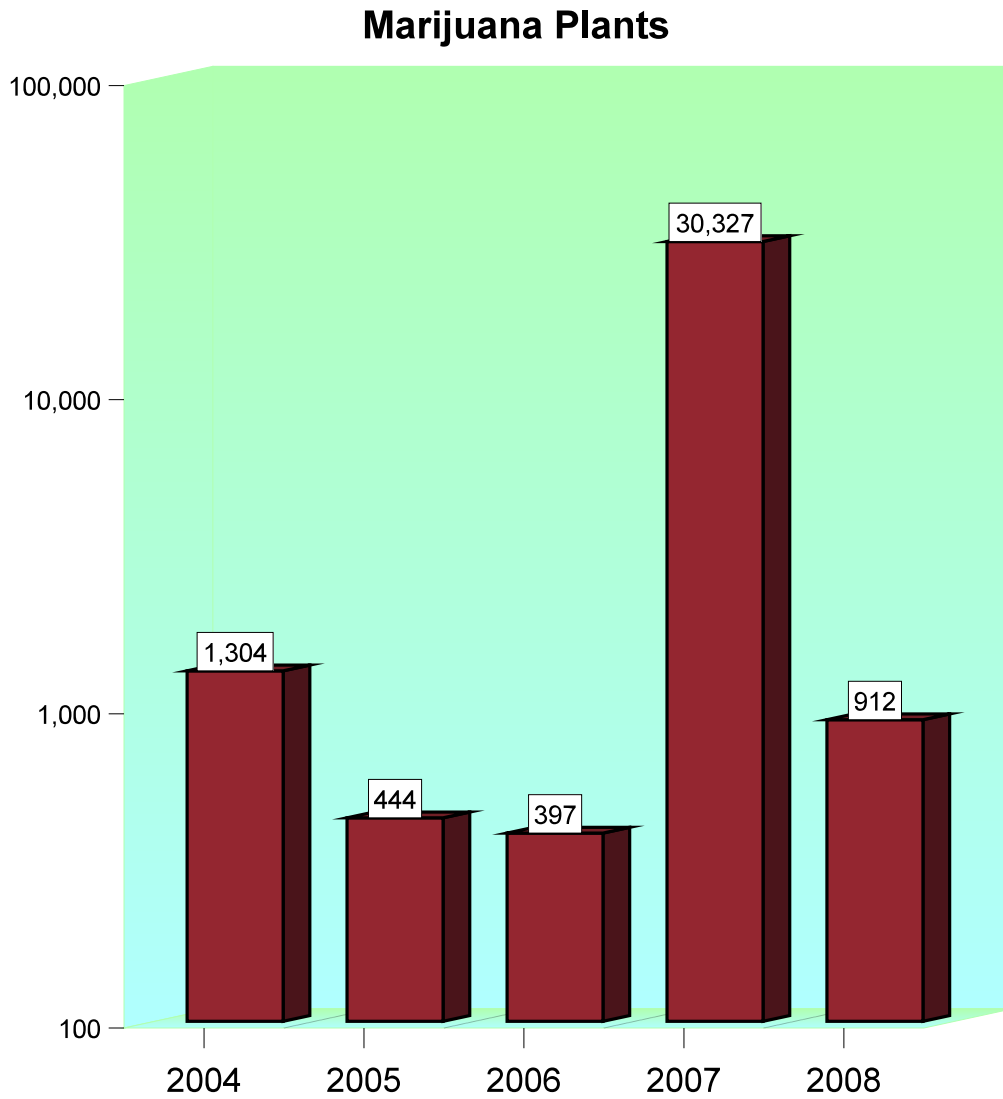
MARIJUANA SEIZURE TRENDS

| | 2004 | 2005 | 2006 | 2007 | 2008 |
|-------------------------------|--------|-------|--------|---------|---------|
| Marijuana - Processed (grams) | 96,204 | 7,886 | 76,956 | 112,458 | 253,515 |



MARIJUANA SEIZURE TRENDS
(Continued)

| | 2004 | 2005 | 2006 | 2007 | 2008 |
|------------------|-------------|-------------|-------------|-------------|-------------|
| Marijuana Plants | 1,304 | 444 | 397 | 30,327 | 912 |



ASSET SEIZURES

| | Cash Forfeited | Cash Seized | Interest Earned | Property Seized* |
|--------------|-----------------------|---------------------|------------------------|-------------------------|
| January | \$ 0.00 | \$ 18,533.00 | \$ 0.00 | \$ 0.00 |
| February | \$ 12,375.24 | \$109,529.98 | \$ 0.00 | \$ 39,805.00 |
| March | \$ 16,348.08 | \$ 23,969.21 | \$ 1,294.77 | \$ 0.00 |
| April | \$ 4,130.49 | \$ 1,776.00 | \$ 0.00 | \$ 0.00 |
| May | \$ 5,000.00 | \$ 2,580.00 | \$ 0.00 | \$ 0.00 |
| June | \$ 11,656.70 | \$ 19,502.23 | \$ 1,419.38 | \$ 7,000.00 |
| July | \$ 14,666.58 | \$ 1,459.00 | \$ 0.00 | \$ 0.00 |
| August | \$ 41,138.92 | \$ 8,018.00 | \$ 0.00 | \$184,000.00 |
| September | \$ 2,198.57 | \$ 25,494.00 | \$ 1,254.25 | \$ 10,000.00 |
| October | \$ 0.00 | \$ 49,134.00 | \$ 0.00 | \$ 0.00 |
| November | \$ 12,200.39 | \$ 9,795.00 | \$ 0.00 | \$ 12,750.00 |
| December | \$ 0.00 | \$ 0.00 | \$ 1,362.59 | \$ 0.00 |
| Total | \$119,714.97 | \$269,790.42 | \$5,330.99 | \$253,555.00 |

*The property seized includes vehicles, but is not necessarily the forfeited amount of the asset.

WEAPON SEIZURES

TYPES OF WEAPONS

Handguns.....33

Rifles.....23

Shotguns.....20

TOTAL..... 76

OPERATIONAL EXPENSES

| | <u>Asset Seizure</u> | <u>Agency Trust Fund</u> | <u>Total Expenses</u> |
|--------------|---------------------------|---------------------------|----------------------------|
| January | \$0.00 | \$9,012.92 | \$9,012.92 |
| February | \$0.00 | \$38,712.99 | \$38,712.99 |
| March | \$0.00 | \$2,138.98 | \$2,138.98 |
| April | \$0.00 | \$8,794.26 | \$8,794.26 |
| May | \$0.00 | \$4,130.49 | \$4,130.49 |
| June | \$25,865.75 | \$0.00 | \$25,865.75 |
| July | \$0.00 | \$1,422.59 | \$1,422.59 |
| August | \$0.00 | \$1,979.90 | \$1,979.90 |
| September | \$0.00 | \$3,424.46 | \$3,424.46 |
| October | \$0.00 | \$9,602.65 | \$9,602.65 |
| November | \$0.00 | \$3,138.88 | \$3,138.88 |
| December | \$0.00 | \$3,835.08 | \$3,835.08 |
| Total | <u>\$25,865.75</u> | <u>\$86,193.20</u> | <u>\$112,058.95</u> |

*Does not include grant funds from the Office of Emergency Services.

TRAINING RECEIVED BY AGENTS & SUPPORT STAFF

It is paramount that our law enforcement personnel receive ongoing specialized training in the field of narcotic enforcement. In the ever changing narcotic enforcement field, we must be kept informed and educated on current drug trends, case law and officer safety.

BINTF continues to place a priority on enhancing the expertise of its personnel by attending formal drug training courses in 2008. The agencies supporting BINTF are committed to the development of its personnel through training. Agents newly assigned to the unit are to complete several training courses to provide the agent with basic and intermediate levels of expertise relating to narcotic investigations.

In 2008, BINTF agents attended 10 formal training courses ranging from 2 hours to 80 hours in length for a total of 482 hours of training. These courses covered topics in almost every facet of narcotics investigation, including clandestine lab certification and investigation, 80 hours of narcotics training, entry training, and Drug Endangered Children (DEC).

Ten (10) Task Force personnel attended the annual California Narcotic Officer's Association (CNOA) Training Conference. BINTF support staff also attended grammar, proofreading, and management skills training.

During 2008, BINTF personnel received a total of 802 hours of training.

| Course Name | Number of Hours | Persons Attended | Total Hours |
|---|-----------------|------------------|-------------|
| Clandestine Laboratory Safety Certification | 40 | 2 | 80 |
| Clandestine Laboratory Investigation Update | 36 | 1 | 36 |
| Clandestine Laboratory Re-certification | 10 | 3 | 30 |
| CNOA 2008 | 24 | 10 | 240 |
| DAR | 24 | 1 | 24 |
| Excel | 16 | 1 | 16 |
| Management Skills for Secretaries, Administrative Assistants & Support Staff | 8 | 1 | 8 |
| Mistake-free Grammar and Proofreading | 8 | 2 | 16 |
| Narcotics Investigation (DOJ) | 80 | 2 | 160 |
| Narcotics Tactical Entry | 16 | 11 | 176 |
| Search Warrant Training | 8 | 2 | 16 |
| TOTAL HOURS | 194 | 33 | 802 |

TRAINING PROGRAMS PRESENTED BY AGENTS

A variety of community presentations are continually made throughout the year by Butte Interagency Narcotics Task Force (BINTF) detectives and support staff from the Drug Endangered Children (DEC) program on substance abuse, drug recognition, methamphetamine laboratory recognition and the DEC program. BINTF detectives provide these services to schools, civic groups, community organizations, the medical community, fire department personnel and law enforcement officers.

| DATE | PRESENTER & RECIPIENT | TOPIC | TIME (Hours) | NUMBER IN ATTENDANCE |
|-------|--|---------------------|--------------|----------------------|
| 02/08 | J. Piazza Gridley Kiwanis | Methamphetamine | 1.0 | 15 |
| 03/08 | S. Brown/K. Sorenson Oroville High School | DEC | 3.0 | 26 |
| 03/08 | C. Sturdy Sunrise Rotary | Drug Identification | 1.0 | 75 |
| 03/08 | D. Vance CSUC | DEC | 2.0 | 25 |
| 04/08 | D. Vance Options For Recovery | DEC | 2.0 | 20 |
| 05/08 | D. Vance Merced/Fresno/Kern Meth Summit | DEC | 8.0 | 75 |
| 08/08 | D. Vance Sacramento County | DEC | 4.0 | 30 |
| 08/08 | D. Vance Parent Infant Program | DEC | 2.0 | 30 |
| 09/08 | C. Sturdy STARS Academy | BINTF Labs/Drugs | 4.0 | 30 |
| 09/08 | D. Vance Butte/Yuba/Sutter Head Start | DEC | 2.0 | 30 |
| 09/08 | D. Vance Options For Recovery | DEC | 2.0 | 20 |
| 10/08 | T. Stuart Ophir Elementary School | Drug Identification | 0.5 | 42 |
| 10/08 | C. Sturdy Oroville Realtors | Methamphetamine | 3.0 | 50 |
| 10/08 | D. Vance Butte/Yuba/Sutter Head Start | DEC | 2.0 | 30 |
| 11/08 | D. Vance Butte/Yuba/Sutter Head Start | DEC | 2.0 | 30 |

| DATE | PRESENTER & RECIPIENT | TOPIC | TIME (Hours) | NUMBER IN ATTENDANCE |
|---------------|--|-------------------------|-------------------------|---------------------------------|
| 11/08 | D. Vance Butte County Adult Education | DEC/Drug Recognition | 2.0 | 30 |
| 12/08 | K. Sorenson Oroville High School | Drug Identification | 2.0 | 30 |
| TOTALS | | | 42.5 | 588 |

EVIDENCE SUMMARY REPORT

During the calendar year 2008, evidence seized by the Butte Interagency Narcotics Task Force (BINTF) is processed on a daily basis and held until its usefulness has expired. The following is an Evidence Summary Report.

Cases Received:

During 2008, BINTF received evidence in one hundred and ninety-nine (199) cases from North County and South County.

Destruction:

During the calendar year 2008, the BINTF Evidence Custodian obtained one (1) Blanket Order for destruction. On June 22, 2008, Blanket Order #12 was executed, resulting in the destruction of thirty (30) firearms, numerous knives, martial arts weapon and a crossbow. Blanket Order #12 included the destruction of the below listed drugs.

Drugs Destroyed:

| DRUG TYPE | QUANTITY DESTROYED | |
|-----------------------------|---------------------------|------------------|
| Anabolic Steroids | 26 | vials |
| Cocaine | 1,387.60 | grams |
| Ephedrine | 10,020.75 | grams |
| Hashish | 75.00 | grams |
| Heroin | 236.26 | grams |
| Marijuana (Processed) | 5,178.69 | grams |
| Marijuana Plants | 16 | plants |
| Marijuana Cigarettes | 25 | cigarettes |
| Marijuana Laced Brownies | 583.92 | grams |
| Marijuana Seeds | 107.88 | grams |
| Methamphetamine (All Types) | 702.18 | grams |
| Methamphetamine (Liquid) | 45 | cubic centimeter |
| Opium | 359.99 | grams |
| Opium Plants | 22.00 | plants |
| Pills (Other) | 2,710.00 | dosage units |

FOCUS

Butte Interagency Narcotics Task Force (BINTF) continues to be the premier drug enforcement agency in Butte County.

BINTF will continue to recognize and deploy manpower in those areas of the county identified by agencies to have an influx in high crime.

BINTF personnel will continue to utilize undercover buy programs, as well as host special enforcement operations such as the well known Strategic Tactical Operation Program (STOP) to combat crime.

BINTF has completed 23 years of service to the community and citizens of Butte County. The BINTF North Office has now been operational for 6 ½ years. In conjunction with the California Department of Justice Bureau of Narcotic Enforcement Redding Regional Office and local allied agencies, BINTF continues to expand its capabilities in the ring of drug enforcement. The participating agencies continue to enable BINTF to maximize its effectiveness and efficiency of their personnel thereby increasing the proficiency and operational effectiveness of the task force.

BINTF will continue to target methamphetamine traffickers, with emphasis on methamphetamine manufacturers, and will continue with support from the California Department of Justice in identifying the illegal distribution of precursor chemicals to clandestine laboratories.

BINTF will continue to investigate, seek out, and remove children exposed to drug laboratories and other unhealthy drug-related environments which place these children at risk.

BINTF will continue to identify drug trends affecting the people of Butte County, will work closely with allied agencies in attempting to identify the sources controlled substances, conduct investigations, arrest the violators, and participate in successful prosecution.

GOALS

BINTF personnel, with oversight by members of the BINTF Board, will continue to work closely with allied agencies in identifying local crime trends and conducting law enforcement actions in specified areas to combat drug trafficking, gang activity, and other criminal violations.

In 2009, BINTF will continue to work with city, county, state and federal agencies in order to maximize law enforcement effectiveness in a combined effort to infiltrate, dismantle and cause the prosecution of those individuals involved in criminal activity in Butte County.

In 2009, BINTF Agents will liaison with members of the California Department of Justice and California Narcotics Officer's Association to provide training classes to their parent agency personnel. Classes to include clandestine laboratory officer safety techniques, drug endangered children (DEC) investigative techniques, drug trends and recognition, basic asset forfeiture laws, expert testimony in drug cases and informant management.

BINTF will continue to prioritize drug investigations relating to child endangerment, and will make every effort to remove children from drug environments by arresting individuals, and working with the Butte County District Attorney's Office in the prosecution of those individuals who place children in harm's way.

CONCLUSION

The Butte Interagency Narcotics Task Force (BINTF) has now been operational for 23 years.

BINTF is recognized by allied agencies as the county's expert in all aspects of drug investigations from major manufacturers to street level dealers.

BINTF Agents, because of their training, have been instrumental in providing the expertise in a variety of narcotics investigations, as well as, mutual aid to local law enforcement. The mutual aid has consisted of covert surveillances relating to other crimes, including gang related investigations, as well as, robbery. BINTF has been responsible in providing a host of training and public presentations to assist in making people aware of drug trends and BINTF's role in drug investigations.

BINTF Commanders and personnel recognize the continuous support the BINTF Board Members and allied agencies have given in allowing the task force to better serve the citizens of Butte County.

In 2008, BINTF arrested 316 people, seized 22 clandestine laboratories, seized 76 weapons, and removed 62 children from drug endangered homes.

BINTF continues to prioritize the investigation of methamphetamine manufacturing and trafficking cases which continue to plague this county, as well as the nation.

During calendar year 2008, BINTF experienced personnel changes to the unit.